



OPEN

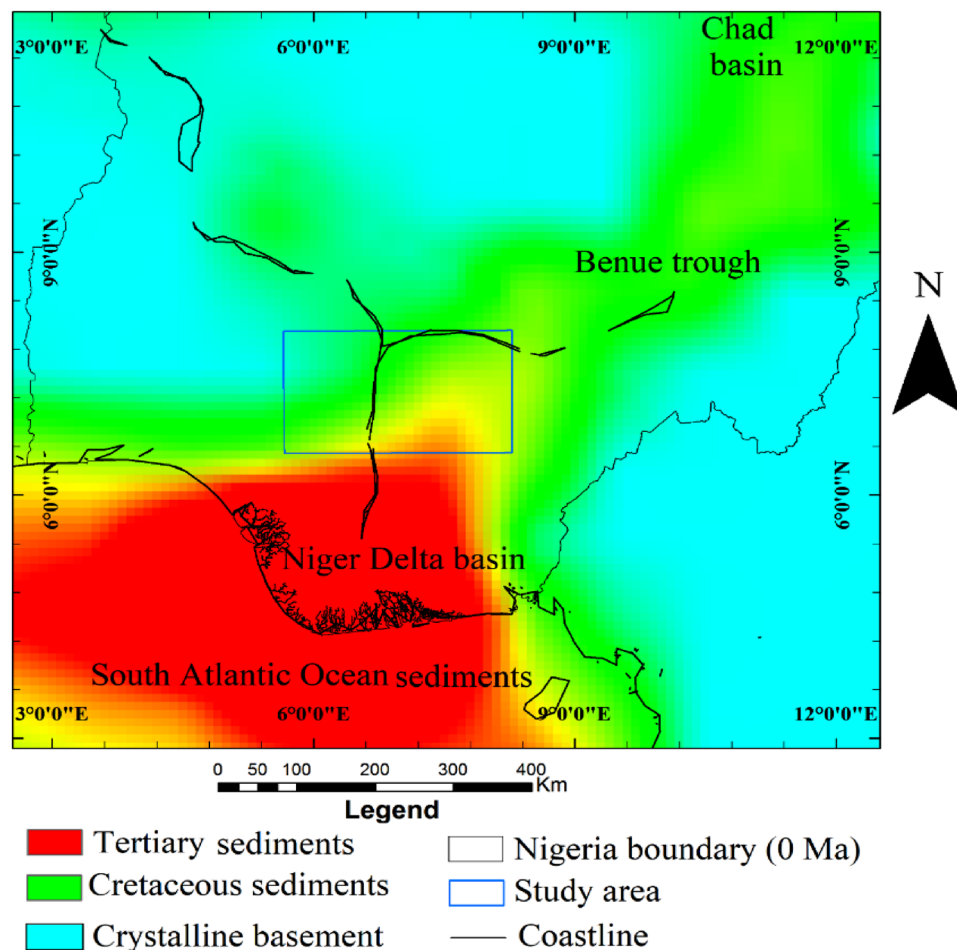
# Contrasting structures of the Southern Benue trough and the contiguous crystalline basement as observed from high-resolution aeromagnetic data

Leke Sunday Adebisi<sup>1,2✉</sup>, Akinola Bolaji Eluwole<sup>2</sup>, Akindeji Opeyemi Fajana<sup>2</sup>, Naheem Banji Salawu<sup>2,3</sup> & Aliyu Saleh<sup>4</sup>

The present study investigated crustal structures and geological bodies within selected areas of the southern Benue trough and the adjacent crystalline basement. It utilized high-resolution aeromagnetic data to provide original insights into the contrasting structures and geological bodies within the area, while also identifying promising areas for further mineral and hydrocarbon investigations. The aeromagnetic anomaly data were analyzed using various techniques, including total gradient magnitude, pseudo-gravity transformation, tilt derivative, and source parameter imaging. The total gradient magnitude anomalies revealed a considerable component of the basin affected by block faulting which may have resulted from severe tectonic and structural deformation of the metamorphic basement and the subsequent injection into the sedimentary sequence, a few intrusions. The pseudo-gravity transformation identified a large igneous body in the sedimentary basin which is characterized by positive pseudo-gravity anomalies and surrounded on both sides by linear negative anomalies that signify a rift zone. The positive amplitude of the tilt derivative identified subtle linear magnetic minerals associated with the geologic structure and igneous bodies that suggest considerable mineral exploration prospects. A two-dimensional model of the source parameter imaging reveals the basement below the sedimentary basin to be intensely fragmented and variably subsided with the floor of the basin forming irregular upward and downward folds. In conclusion, the findings suggest promising prospects for mineral exploration along the margin of the sedimentary basin and potential hydrocarbon resources in the northeastern segment of the basin, which is characterized by fewer intrusions.

The Nigerian Benue trough is an intra-continental rift basin during the Cretaceous period<sup>1–6</sup>. The trough continues inland from the petroleum-bearing Niger Delta basin and stretches nearly 800 km to northeastern Nigeria, where it bifurcates into the northern (Gongola) and the southern (Yola) arms. Figure 1 is a reconstructed map showing the present-day (0 Ma) boundaries of the Benue trough; the Niger Delta basin (a protraction of the South Atlantic marine sediments) and the crystalline basement of Nigeria<sup>7,8</sup>. The southern arm of the Benue trough is connected to a deep depression beneath the southern boundary of the Chad basin while the northern arm continues below the Chad basin as a protracted depression that stretches much further than Lake Chad<sup>1–3,9</sup>. The Nigerian Benue trough is seemingly divided into the Lower, Middle and Upper parts with no observable geological boundaries. It has widths between 130 and 150 km<sup>6</sup>.

<sup>1</sup>Department of Physical Sciences, Landmark University, PMB 1001, Omu-Aran, Kwara State, Nigeria. <sup>2</sup>Department of Geophysics, Federal University, Oye-Ekiti, Ekiti State, Nigeria. <sup>3</sup>BS Geophysical and Consultancy Ltd, Ilorin, Nigeria. <sup>4</sup>Physics Unit, School of Preliminary and Continuing Education, Ibrahim Badamasi Babangida University, Lapai, Nigeria. ✉email: adebiyi.leke@lmu.edu.ng; olalakes2012@gmail.com



**Figure 1.** Reconstructed map of Nigeria at 0 Ma showing the boundary of the Benue trough, Niger Delta basin and the crystalline basement.

Magnetic data have played major roles in understanding and characterizing geological formations around the world<sup>10–14</sup>. The data is used frequently to delineate magnetic thin sheets or contacts such as faults. This has been used frequently in petroleum exploration where magnetic data is used to identify faults in the basement that may have control over the depositional history of the sedimentary basin<sup>15–19</sup>. In this case, the interpreter must have an understanding of the structural and lithological framework and the importance of regional deposition patterns<sup>20–24</sup>.

Several groundbreaking studies have been conducted in the Benue trough, many of which have significantly enhanced our understanding of this geological environment. Pioneering studies by authors such as<sup>1,25–32</sup> consistently reveal a distinctive central axial positive gravity anomaly, flanked by elongated negative gravity anomalies.

Reference<sup>33</sup> analysed airborne magnetic data in the lower and middle Benue trough and unveiled several igneous rocks within the sedimentary sequence and the crystalline basement. These rocks are characterized by varying thicknesses and magnetization polarities, and together with the basement, exhibit depths ranging from 1.7 to 7.30 km.

Reference<sup>3</sup> promulgated a geological model for the origin of the Benue trough during the Lower Cretaceous. Notable findings include the formation of isolated basins in the Aptian, the development of a substantial delta in the upper Benue trough during the Albian, and a Turonian transgression connecting Atlantic and Tethys waters through the Sahara, Niger basins, and Benue trough. The proposed tectonic evolution involves transcurrent faulting, resulting in compressional and tensional regimes, with major compressional phases occurring during the Santonian and at the end of the Cretaceous. The study suggested sinistral wrenching along the trough during the initial stages of the opening of the Gulf of Guinea.

Additional key findings by many authors including<sup>1,2,5,30,34,35</sup> have significantly advanced our knowledge. Despite these collective efforts, certain knowledge gaps persist, including the use of low-resolution geophysical data, insufficient data to consolidate the trough development in relation to plate drifting, and a predominant focus on the Lower Cretaceous to the end of the Cretaceous, leading to a gap in understanding more recent geological features and potential post-Cretaceous changes.

However, recent studies by many authors, including<sup>4,6,36–47</sup> have provided additional insights into the geological features and potential hydrocarbon and mineral resources by analysing one, two, or all of airborne magnetic

data; gravity data; and satellite data in various parts of the Benue trough. Despite these advancements, critical gaps persist including the absence of an up-to-date review of the trough development in relation to plate movement, as well as an inept description of the contrasting features of the Cretaceous basin and the adjoining crystalline basement.

### Location and geologic setting

The study area extends from longitude  $5^{\circ}30' E$  to  $8^{\circ}30' E$  and latitude  $6^{\circ}00' N$  to  $8^{\circ}00' N$  encompassing parts of Benue, Kogi, Edo, Enugu, and Ondo, as well as small portions of Nasarawa, Anambra, Ebonyi and Ekiti States in the southern parts of Nigeria (Fig. 2). It is underlain by the Cretaceous sediments of the southern Benue trough and the crystalline basement of southwestern Nigeria. The Cretaceous sediments in the study area extend slightly downward, intersecting with the Tertiary sediments of the Niger Delta basin, and westward into the crystalline basement of southwestern Nigeria.

### Sedimentary terrane

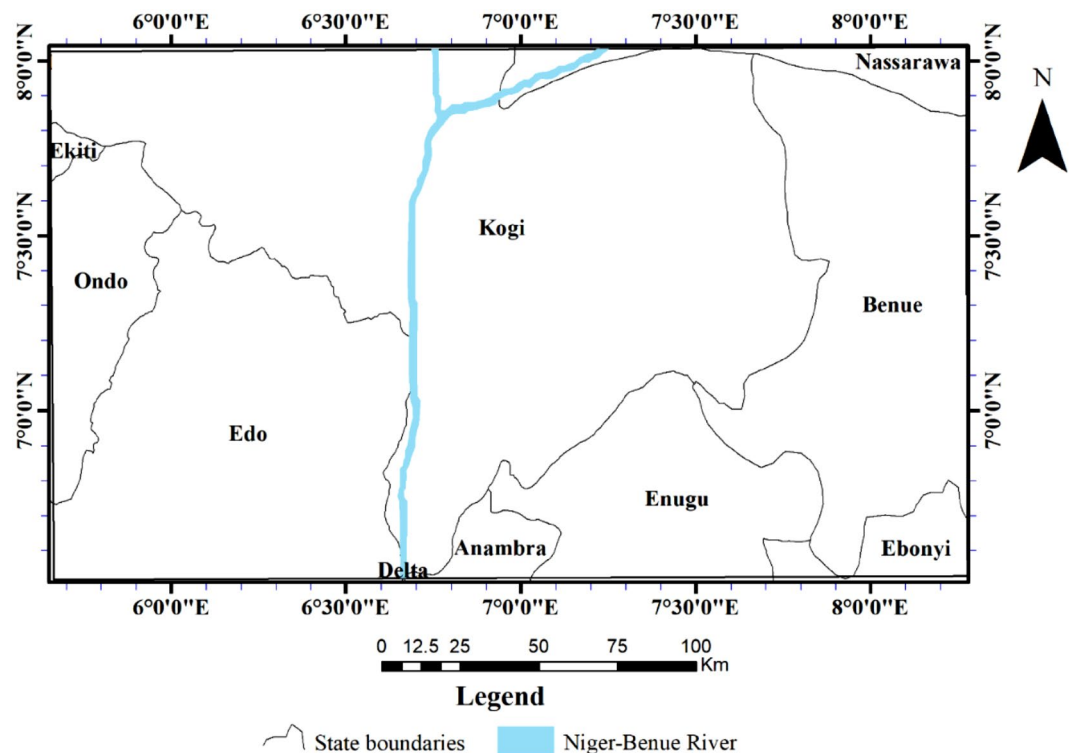
The sedimentary basin in the study area is part of the southern Benue trough and a small part of the Niger Delta basin (Fig. 3). It is underlain, essentially, by the Cretaceous sediments in the north-eastern segments and by the Tertiary sediments in the southern segments<sup>4,35,48</sup>. However, it is worth mentioning that the Cretaceous sediments in the northeastern segments are specifically Upper Cretaceous, whereas the Tertiary sediments in the southern segments range from Tertiary to Quaternary. The part of the study area adjacent to the coastline has an extensive area of Quaternary sediments that continue inland along the Niger-Benue River. The sedimentary sequences in the study area were intruded by mafic igneous rocks belonging to the Tertiary or later<sup>9,35,42,48</sup>.

### Crystalline terrane

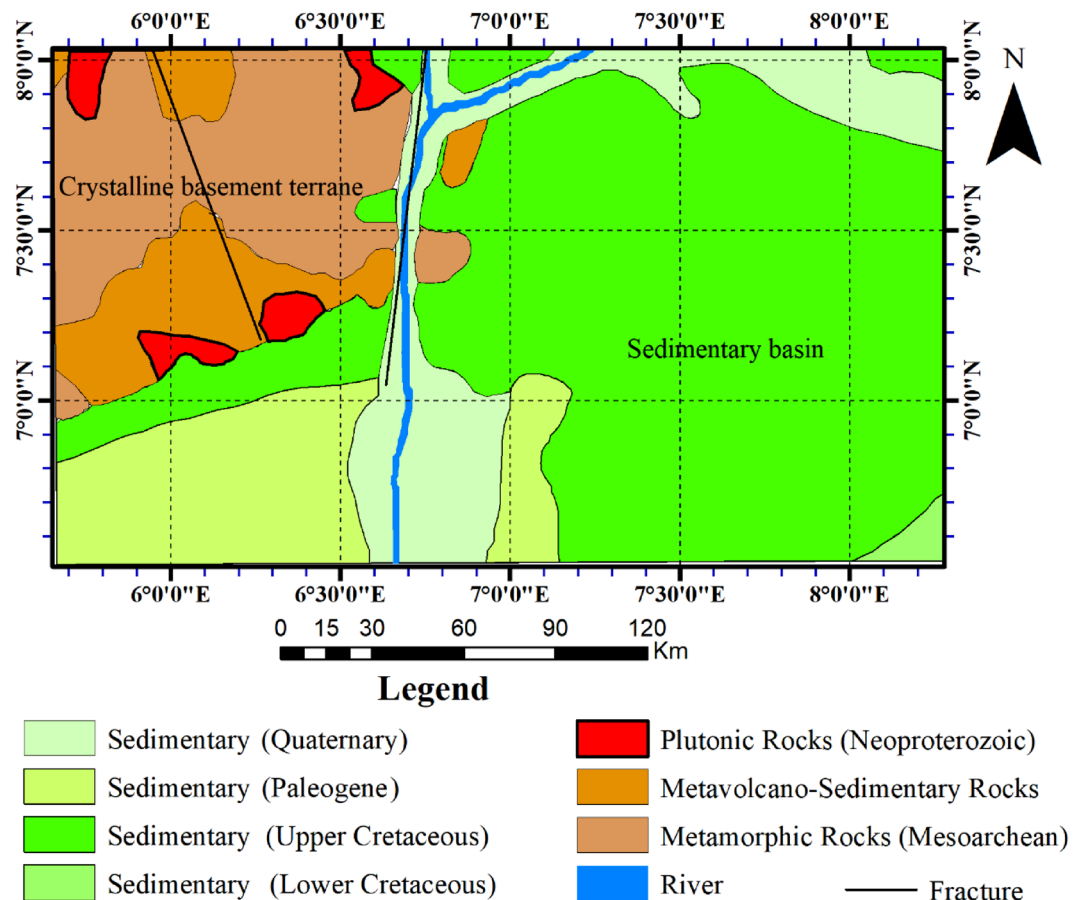
The crystalline basement in the study area displays a polycyclic sequence of reactivated Archaean basement comprising variably and extensively migmatized gneisses, orthogneisses, paragneisses, fragments of silicified quartzite-schist belts, and Pan-African granitoid (Fig. 3). The crystalline basement has several regional fractures cutting through it, most of which exhibit NE-SW and NNE-SSW structural alignments. The Kalangai-Zungeru-Ifewara and Anka-Yauri-Iseyin shear zones are notable examples of such regional fractures. Incidentally, a few of the regional fractures, particularly transcurrent faults extend to the South Atlantic Ocean, where they connect with the Atlantic ridge system<sup>49–51</sup>.

### Cretaceous and tectonic evolution of the Benue Trough

The Nigerian Benue trough is an aborted subset of a triple junction at the time of the opening of the Gulf of Guinea<sup>1–3,52,53</sup>. The trough formation was initiated by the rifting of the African and South American continental plates, which began in the Cretaceous period<sup>6,9,54,55</sup>. To understand the development of the trough in relation



**Figure 2.** Location map showing the Nigerian provinces that fall within the study area.



**Figure 3.** Geological map of the study area showing the regions underlain by the sedimentary and crystalline rocks.

to plate movements, we present a pre-drift reconstruction of Gondwana at 200 Ma which corresponds to the early Jurassic (Fig. 4a)<sup>7</sup>. The map shows the initial position of the African and South American plates. The continents in the southern hemisphere originally existed as one supercontinent at this period<sup>56–60</sup>. However, during the Lower Cretaceous, at about 100 Ma, the seafloor began to spread and the supercontinent split, causing the African and South American plates to drift apart. This led to the opening of the South Atlantic Ocean (Fig. 4b)<sup>7</sup>. The drifting of the continents resulted in continental volcanic activity, earthquakes, and the development of regional continental fault systems<sup>9,61–64</sup>. During this period, the Nigerian Benue trough, aided by the regional intra-sedimentary fault system, began to open which was later aborted. The opened Benue trough experienced marine transgression which led to the deposition of both continental and marine sediments. This was followed by the reactivation of the intra-sedimentary fault system that resulted in major structural deformation characterized by the development of synclinal and anticlinal folds and the subsequent injection of igneous rocks into the basement and the sedimentary sequences<sup>6,9</sup>. Figure 4c shows the present-day position of the African and South American plates which corresponds to the Holocene (0 Ma). The present-day coastline and intra-continental sedimentary thickness across the South Atlantic Ocean are equally shown in Fig. 4d<sup>7,8</sup>.

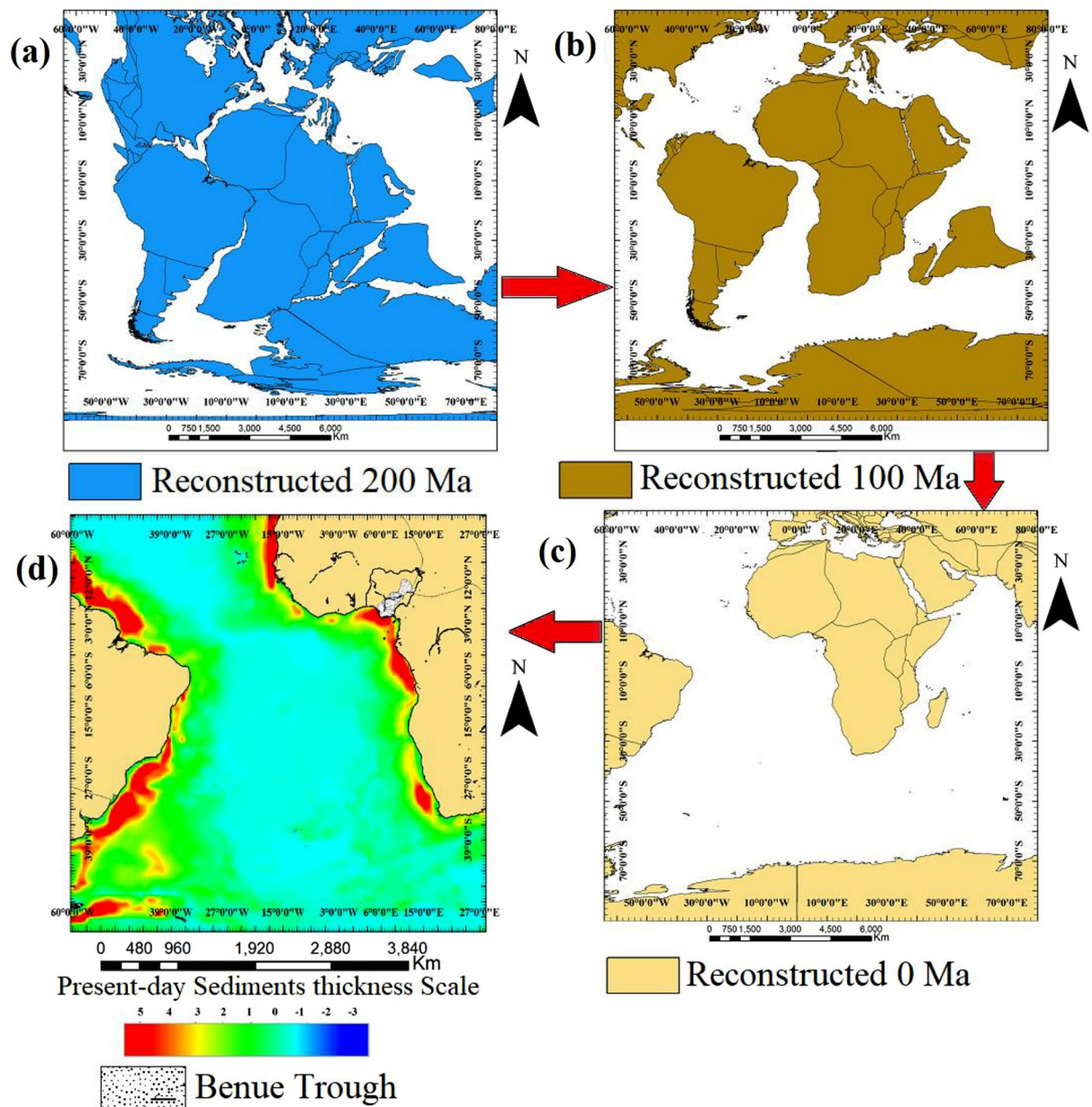
## Data

### Magnetic data

High-resolution aeromagnetic anomaly datasets across the study area were procured from the Nigerian Geological Survey Agency (NGSA). The acquisition of the unprocessed data was done by Fugro Airborne Surveys company along NW–SE profiles at a magnetic data recording interval of 0.1 s and a mean barometric flight altitude of 80 m<sup>65</sup>. The data were acquired at 500 m profile spacings and 2000 m tie-lines<sup>6</sup>. Essential corrections and data improvements including the removal of temporal variations and the international Geomagnetic reference field (IGRF) were carried out by Fugro Airborne Surveys company<sup>65,66</sup>. Following the elimination of the temporal fluctuations and the IGRF, the residual dataset, representing the magnetic field from the local geological features, underwent gridding at 100 m intervals using the Minimum Curvature technique<sup>65,67</sup> and presented as a 2-D map (Fig. 5).

The analysis and description of low and high-amplitude magnetic areas reveal distinctive features in the crystalline basement adjacent to the Benue trough. This area exhibits a complex distribution of short-wavelength





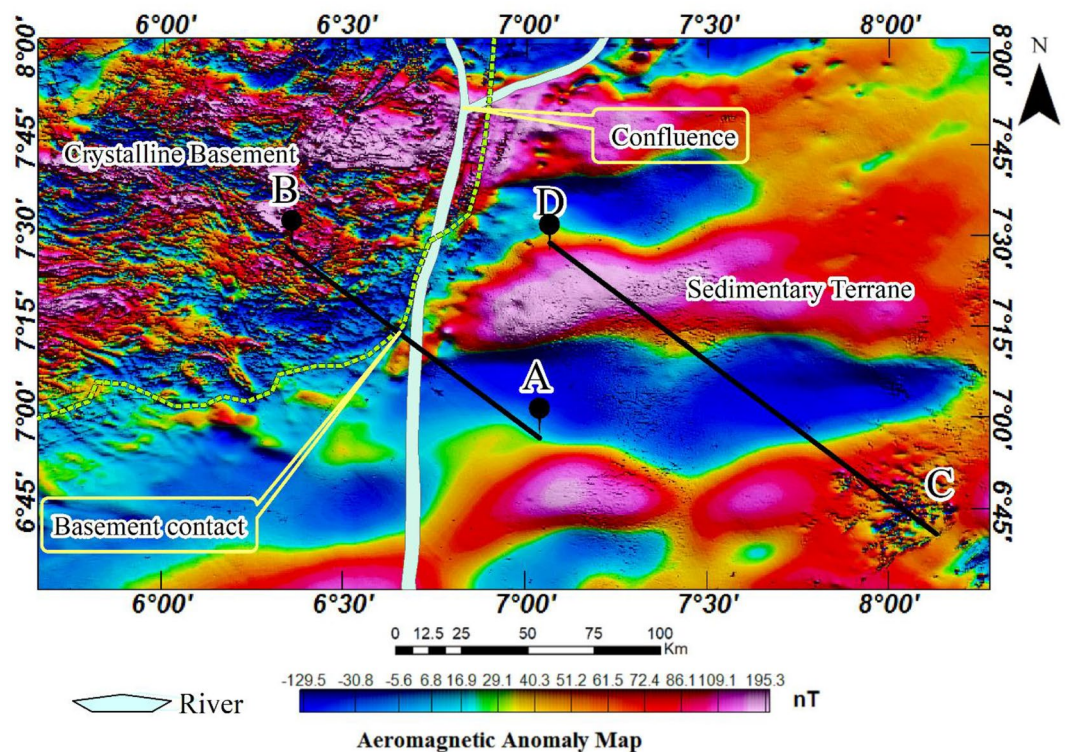
**Figure 4.** Reconstructed maps showing (a) the pre-drift stage of Gondwana (b) the early-drift stage (c) the post-drift stage (d) the opened Atlantic Ocean and the present-day continental sediments thickness.

anomalies. The boundary of the Cretaceous basin and the crystalline basement is generally discernible through a series of magnetic lows, except in the northern segment where a high-amplitude magnetic anomaly extends from the crystalline basement into the Cretaceous basin. Furthermore, within the Cretaceous basin, magnetic lows and highs form alternating belts of long-wavelength anomalies. These are not continuous, instead, they manifest as elongated, separate anomalies. To further distinguish between the two geological terranes, the sedimentary-basement contact was demarcated with a greenish-yellow line (Fig. 5). Furthermore, two profiles A-B and C-D were taken, each stretching 76 km and 147 km across notable parts of the study area. The interpretation of these profiles was based on 2-D structural and stratigraphic analysis.

## Methods

### Total gradient magnitude analysis

Total gradient magnitude (TGM) is one of the edge detection techniques used for interpreting potential field data<sup>68–72</sup>. It is one of the qualitative techniques for interpreting potential field data for delineating geologic structures and rocks. It works by forming maxima directly on the edges of the causal bodies<sup>68–72</sup>. The tool was applied to the aeromagnetic anomaly data of the study area to detect the main geological features and structural alignment which are mainly two-dimensional. The non-dependence of the method on the magnetization direction, remanent magnetization, dip angle, and depths to the top and bottom of sources for two-dimensional magnetic



**Figure 5.** Residual aeromagnetic anomaly map of the study area showing NW-SE profiles.

bodies made it an excellent tool for the study area<sup>73,74</sup>. Details of the TGM are available in the published work of<sup>68–72</sup>. The expression for TGM interpretation for gridded magnetic data is shown in Eq. (1).

$$|TGM(x, y)| = \sqrt{\left(\frac{\partial F}{\partial x}\right)^2 + \left(\frac{\partial F}{\partial y}\right)^2 + \left(\frac{\partial F}{\partial z}\right)^2}, \quad (1)$$

where  $\frac{\partial F}{\partial x}$  and  $\frac{\partial F}{\partial y}$  are the first-order partial derivatives of the residual magnetic intensity field  $F$  in  $x$  and  $y$  horizontal directions respectively while  $\frac{\partial F}{\partial z}$  is the first-order partial derivative of the residual magnetic intensity field  $F$  in a  $z$  vertical direction. The aeromagnetic data of the study area were acquired such that, the profile spacing is sufficiently greater than the station distance, that is  $y \gg x$ , such that the  $\lim_{y \rightarrow \infty} \left(\frac{\partial F}{\partial y}\right) = 0$ . Therefore, Eq. (1) reduces to Eq. (2) for delineating two-dimensional geological features<sup>75,76</sup>.

$$|TGM(x, y)| = \sqrt{\left(\frac{\partial F}{\partial x}\right)^2 + \left(\frac{\partial F}{\partial z}\right)^2}. \quad (2)$$

### Pseudo gravity transformation

A pseudo-gravity is an assumed gravity anomaly observable when a magnetization contrast is replaced by an equivalence density contrast<sup>77–81</sup>. Due to the dipolar nature of magnetic sources and the fact that the magnetization of a body can point in any direction, magnetic responses are far more complicated than gravitational ones. Pseudo-gravity transformation is an anomaly simplifier, making the analysis of magnetic data considerably simpler. The transformation may be a helpful tool for interpreting magnetic anomalies, not because a mass distribution exactly corresponds to the magnetic distribution beneath the magnetic survey, but rather because gravity anomalies are sometimes more instructive and simpler to analyse than magnetic anomalies<sup>80–82</sup>. By converting the magnetic anomaly to a pseudo-gravity anomaly and examining the anomaly for maximum horizontal gradients, it is possible to make use of the fact that gravity anomalies over tabular bodies have the steepest horizontal gradients roughly over the edges of the bodies<sup>75,80,81,83</sup>. Furthermore, pseudo-gravity transformation can potentially reduce the stronger effect of shallow magnetic sources and increase the dominance of magnetic anomalies from deeper sources (Panepinto et al.<sup>81</sup>). The relationship between the magnetic potential and gravitational field established by Poisson leads to the pseudo-gravity transformation<sup>81</sup>. The magnetic and gravitational scalar potentials of a body with uniform magnetization and density in volume  $v$  are given by Eqs. (3) and (4) respectively<sup>77,81</sup>.

$$V(q) = -M \nabla_q \iiint_V \frac{1}{r} dv, \quad (3)$$

$$U(q) = G \rho \iiint_V \frac{1}{r} dv, \quad (4)$$

where  $q$  is the data observation point,  $r$  is the source distance,  $M$  is the magnetization distribution,  $G$  is the gravitational constant and  $\rho$  the source density. Using Eqs. (3) and (4) we obtained Eqs. (5), (6) and (7):

$$V(q) = -\frac{1}{G\rho} M \nabla_q U, \quad (5)$$

where

$$g_M = \nabla_q U, \quad (6)$$

$$V(q) = -\frac{1}{G\rho} M g_M. \quad (7)$$

From Poisson's relation,  $g_M$  refers to the component of gravity in the magnetization direction. The pseudo-gravity operator converts the magnetic anomaly into a gravity-like response as if the body's magnetism were replaced with the same density distribution, where density and magnetic susceptibility have a perfect linear association<sup>77,81,82</sup>. The pseudo-gravity transformation was applied to the aeromagnetic anomaly data in the current study area to simplify the magnetic anomaly and, where necessary, to locate magnetically strong and magnetically dense geologic bodies within the Cretaceous basin. Since the pseudo-gravity map is an equivalent gravity emanating only from magnetic sources and because the main sources of strong magnetic anomalies in the basin are the igneous intrusions and the basement, the pseudo-gravity analysis was found suitable for these purposes. Further details regarding the theory underlying the pseudo-gravity integration are available in the published work of Ref.<sup>77,78,81</sup>.

### Tilt derivative analysis

The tilt derivative (TDR) of a potential field data computes the arctan of the ratio of the potential field's first-order vertical derivative to its horizontal gradient magnitude<sup>84</sup>. The tool works by enhancing magnetically quiet sources that were previously concealed by high-amplitude magnetic sources. It is suitable for delineating magnetic minerals hosted for example by a more magnetic mafic igneous rock<sup>74</sup>. The TDR, however, is very sensitive to the geomagnetic inclination and declination<sup>73</sup>. Further details of the TDR method are contained in the published work of Ref.<sup>84</sup>. For this study, the dependence of TDR on geomagnetic inclination and declination was resolved by transforming the aeromagnetic data to a pseudo-gravity map before applying it<sup>85</sup>. The TDR, according to Ref.<sup>84</sup> is defined as shown in Eq. (8).

$$TDR = \tan^{-1} \frac{FVD}{|HGM(x, y)|}. \quad (8)$$

Equations (9) and (10) defined each of the  $FVD$  and  $|HGM(x, y)|$

$$FVD = \frac{\partial F}{\partial z}, \quad (9)$$

$$|HGM(x, y)| = \sqrt{\left(\frac{\partial F}{\partial x}\right)^2 + \left(\frac{\partial F}{\partial y}\right)^2}, \quad (10)$$

where  $FVD$  and  $|HGM(x, y)|$  are the first-order vertical derivative and horizontal gradient magnitude of the aeromagnetic anomaly data respectively.

### Source parameter imaging analysis

Reference<sup>86</sup> introduced the source parameter imaging (SPI) technique. The method is based on a complex analytic signal that calculates source parameters from gridded aeromagnetic data. It is also known as the local wavenumber technique. The tool when applied to potential field data formed peaks over isolated contacts. The estimation of the depths is carried out without making assumptions about the source thickness<sup>86</sup>. The map is more similar to geology than the magnetic map or its derivatives<sup>86,87</sup>. The SPI solution grids contain information about the edge locations, depths, dips, and susceptibility contrasts. The local wavenumber in Eq. (11) was employed in the estimation of the depths in the source parameter imaging (SPI) method<sup>86,87</sup>.

$$K = \frac{\frac{\partial^2 F}{\partial x \partial z} \frac{\partial F}{\partial x} + \frac{\partial^2 F}{\partial y \partial z} \frac{\partial F}{\partial y} + \frac{\partial^2 F}{\partial z^2} \frac{\partial F}{\partial z}}{\left(\frac{\partial F}{\partial x}\right)^2 + \left(\frac{\partial F}{\partial y}\right)^2 + \left(\frac{\partial F}{\partial z}\right)^2}, \quad (11)$$



where  $K$  is the local wavenumber. The depth estimates are thus calculated using the reciprocal of the local wavenumber given in Eq. (12).

$$Depth_{x=0} = \frac{1}{K_{max}}. \quad (12)$$

$K_{max}$  is the maximum value of  $K$  above the source edge.

## Results and discussion

### Total gradient magnitude anomaly map

The total gradient magnitude (TGM) analysis was applied to the aeromagnetic data to enhance short-wavelength aeromagnetic anomalies corresponding to shallow-seated geological structures and igneous intrusions. The result reveals a significant number of shallow-seated linear and isolation geological features that can be interpreted as fractures and igneous intrusions respectively (Fig. 6a). The fact that the study area extends beyond the Cretaceous basin into the crystalline basement, the TGM analysis delineates distinct structural differences between these two geologically different environments, identifying their boundary (depicted by yellow broken lines). Notably, the crystalline basement displays extremely complex structural architecture with most parts exhibiting imprints of shallow-seated felsic to intermediate igneous rocks (Fig. 6b). These rocks overwhelmingly conceal the metamorphic basement, resulting in shallow overburden thicknesses throughout the crystalline basement<sup>88,89</sup>. The crystalline basement equally displays complex structural orientation, probably as a result of the overprinting of multiple orogenic structures (Fig. 6c)<sup>90–92</sup>.

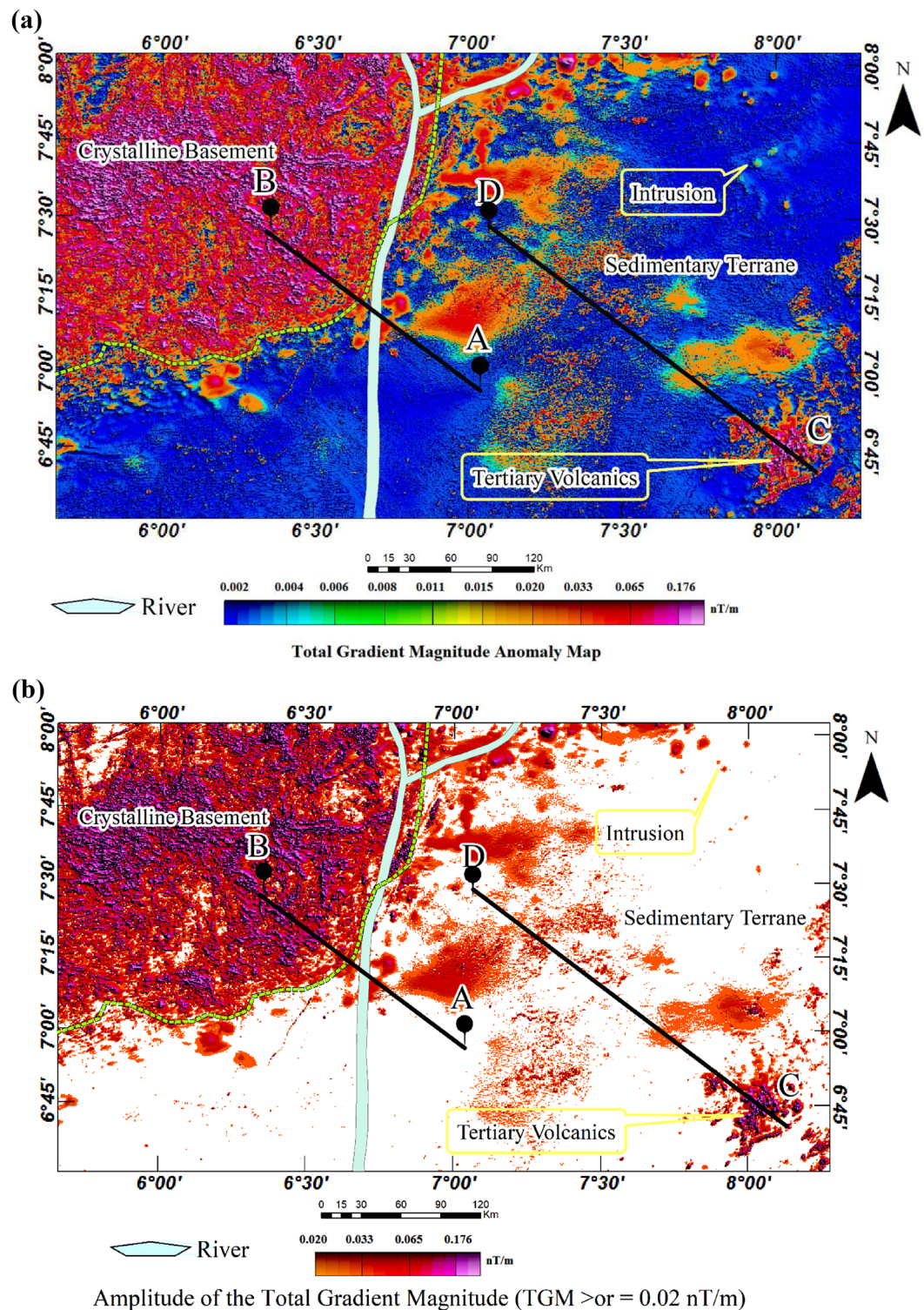
In contrast, the Cretaceous basin shows distinctive igneous rock distribution, enabling the classification of the basin into two separate regions. The first region contains a few igneous rocks, representing a fairly intruded area. This is notable in the northeastern and southwestern parts of the study area (Fig. 6b). The second contains several igneous rocks, representing a highly intruded region. The southeastern part and particularly most areas around the sedimentary-basement contact are notable for a high degree of igneous intrusions. The margin of the Benue trough and the crystalline basement in southwestern parts have been identified with indiscriminate artisanal gold mining<sup>93</sup>. The occurrence of gold in this area could potentially be linked to the prevalence of igneous intrusions. In this case, the contact between these intrusions and high-grade metamorphic rocks, such as quartz-schist, quartzite, and gneisses, could serve as possible locations to maximise the exploitation of gold.

### Pseudo-gravity transformation anomaly map

To reveal magnetically strong geological formations underlying the Cretaceous basin, we applied a pseudo-gravity transformation (PGT) to the aeromagnetic anomaly map. The result shows an elongated region of the basin characterized by a high pseudo-gravity anomaly that stretches eastward in parts of the southern study area (Fig. 7). This region has positive pseudo-gravity anomalies that coincide with the centre of the source and is flanked on both sides by linear negative anomalies. This pattern is common in rift valleys and indicates possible crustal thinning in regions with negative pseudo-gravity anomalies, along with crustal thickening in areas displaying positive pseudo-gravity anomalies<sup>3,5,33,94–97</sup>. By comparing the pseudo-gravity anomalies originating from this magnetic body with those from the crystalline basement and other parts of the basin, we observe a strong magnetic signature, suggesting the existence of a magnetically dense and highly deformed segment. It is, therefore, possible that the deformed segments are mainly of mafic composition, resulting in highly dense and magnetically strong features. The pseudo-gravity result in this study is therefore significant because it demonstrated that, despite recent changes, the structures imprinted during the Cretaceous are well-preserved.

### Tilt-derivative anomaly map

The tilt-derivative (TDR) map (Fig. 8) was derived from the pseudo-gravity anomaly map to enhance subtle magnetic features within highly magnetic mafic igneous rocks (see Fig. 7). It is important to understand that TDR is sensitive to the direction of magnetization. It was, therefore, applied to an aeromagnetic dataset that has undergone a pseudo-gravity transformation to limit its dependency. Reports indicate the presence of lead-zinc-copper mineralization linked with igneous rocks, specifically diorite in addition to the structurally-controlled hydrothermal mineralization in many parts of the southern Benue trough<sup>9,34,39,98–101</sup>. However, the diamagnetic nature of these metals poses challenges in detecting them within the host rocks, particularly mafic igneous rocks. The ability of the TDR to enhance subtle magnetic anomalies, while simultaneously suppressing strong magnetic anomalies was found suitable for identifying potential locations for follow-up mineral investigation. Ultimately, the result identified possible locations to focus on a detailed investigation of the minerals. The result further revealed the dyke intrusions within the northeastern study area, originally identified in the TGM map (see Fig. 6a and b). The distinct linear features of these intrusions were revealed, subsequently highlighting the mineralized segments that were not revealed with other analyses (Fig. 8). This emphasised the possibility of volcanic-hosted lead-zinc-copper mineralization as earlier reported by Ref.<sup>6,9,39</sup>. Generally, the TDR map shows specific parts of the sedimentary basin that may be suitable for a follow-up mineral investigation in the study area. It equally highlights the margin of the Cretaceous basin adjoining the crystalline basement which further substantiates the observation that the region can be a good location for a follow-up investigation of gold mineralisation. A notable drawback associated with TDR applied to pseudo-gravity anomalies is the potential for edge deformation, which could be misinterpreted as skew in the original data.



**Figure 6.** (a) Total gradient magnitude (TGM) aeromagnetic anomaly map of the study area. (b) Total gradient magnitude (TGM) amplitude map of the study area. (c) Hill-shaded total gradient magnitude (TGM) with magnetic lineaments.

### Two-dimensional interpretation of the SPI analysis

The igneous rocks in the study area are not exposed. This made direct measurement of their susceptibility impossible. Similarly, we could not identify any paleomagnetic reports in the area, so no information about the



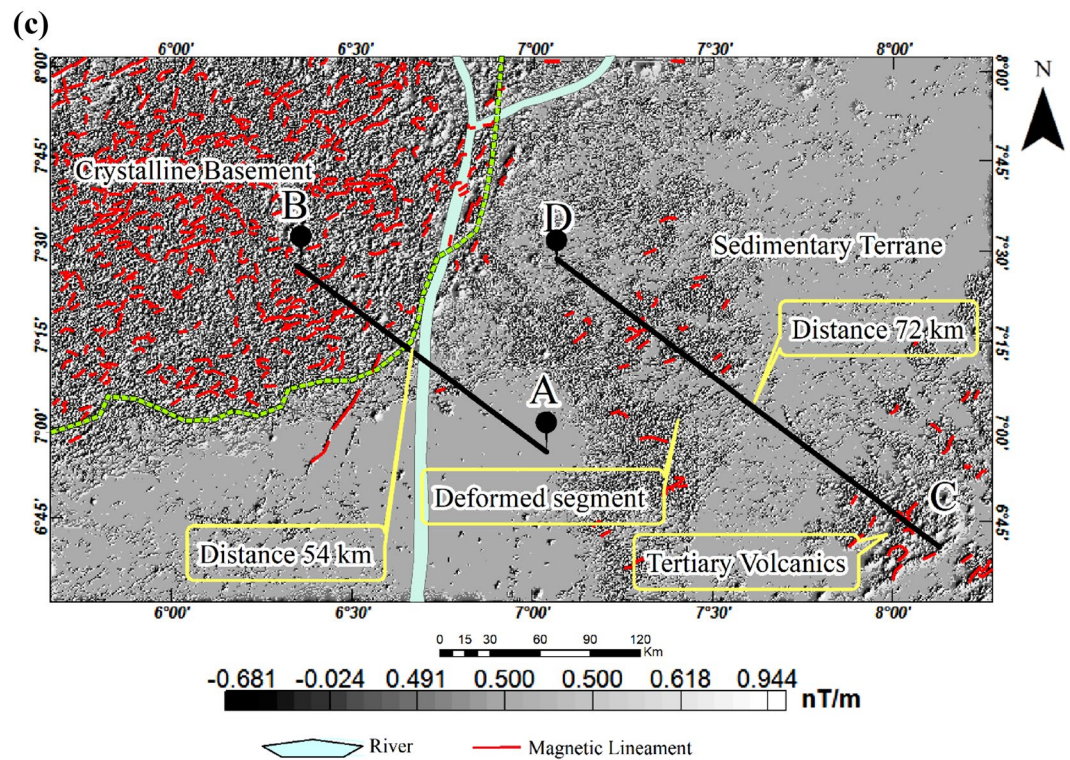


Figure 6. (continued)

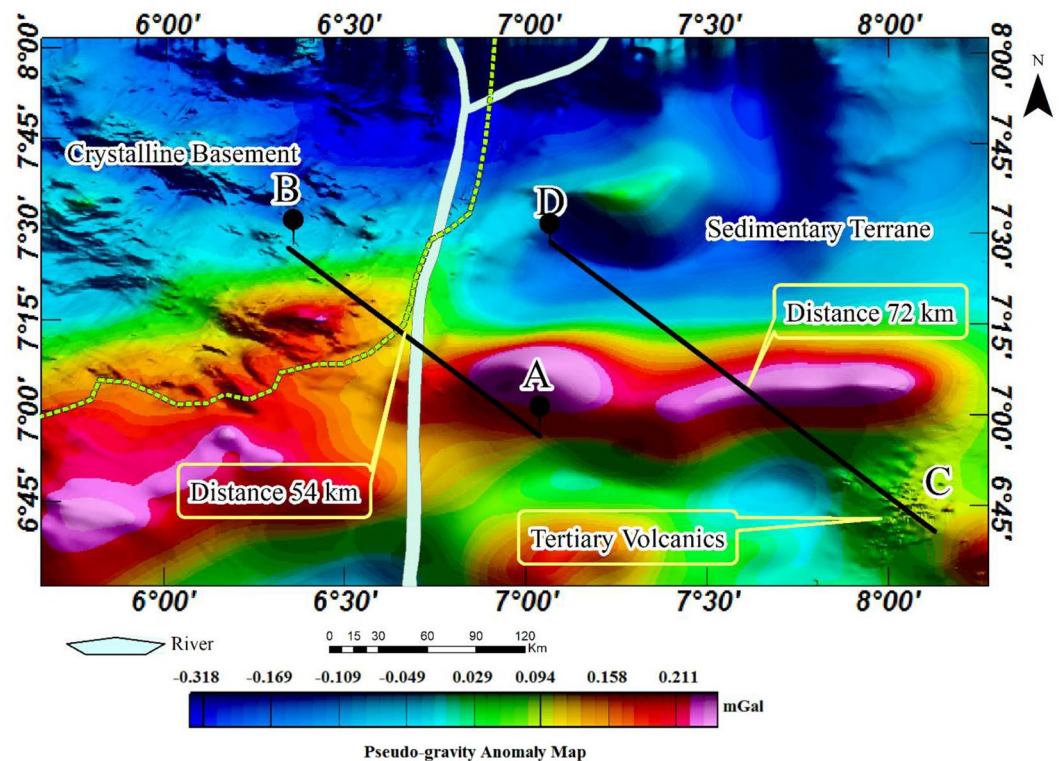
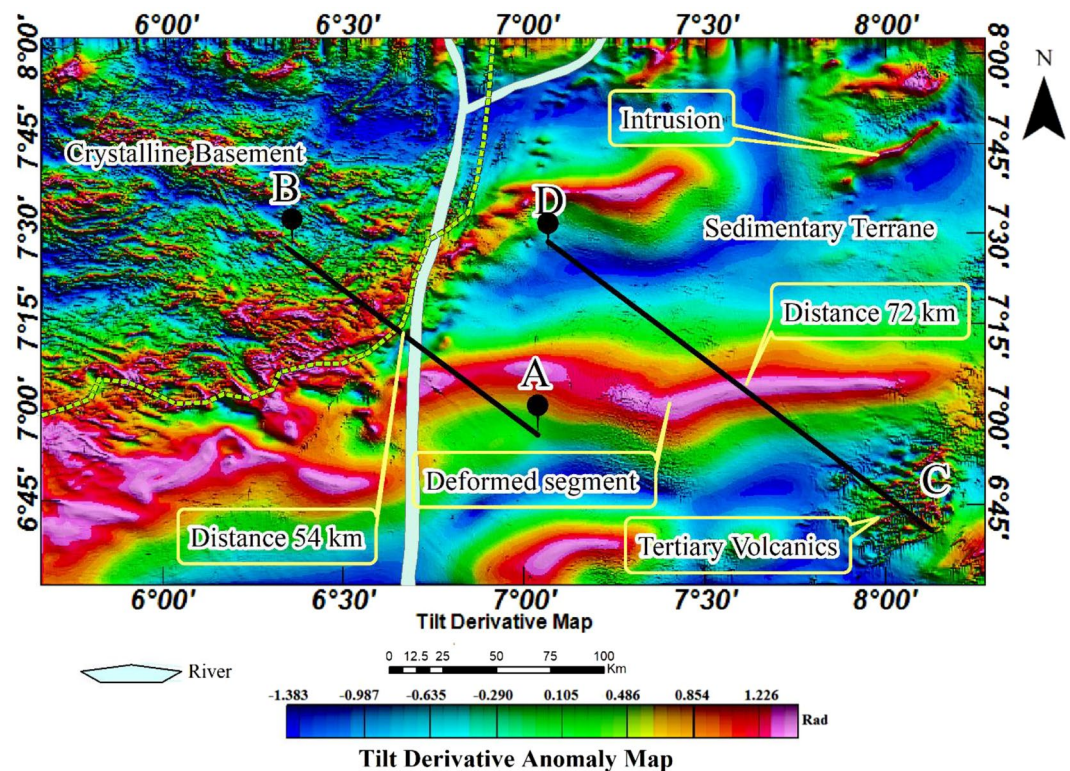


Figure 7. Colour-shaded pseudo-gravity anomaly map of the study area.





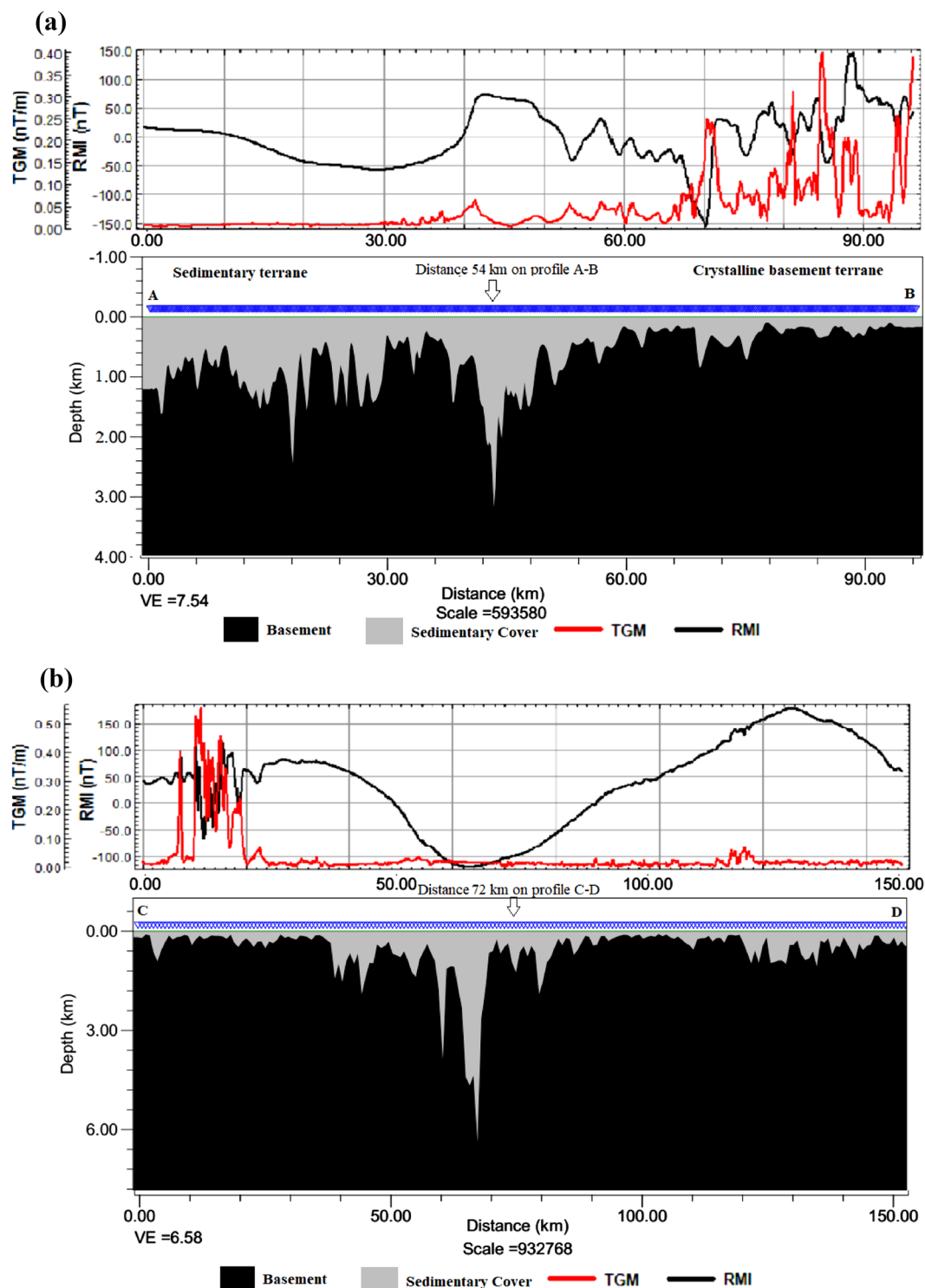
**Figure 8.** Tilt derivative of the pseudo-gravity anomaly map.

remanent magnetization and rock magnetic polarity is available. We, therefore, relied on the source parameter imaging (SPI) for the 2-D interpretation of the subsurface morphology. This is because the estimation of source depth and, ultimately, the display of 2-D subsurface morphology are independent of the source magnetic polarity, remanent magnetization, dip, and strike<sup>87</sup>.

To understand the subsurface morphology, we present two SPI 2-D models from the aeromagnetic profiles A-B and C-D stretching 76 km and 147 km respectively across the study area. This analysis was implemented using magnetic inclination, declination and total magnetic field intensity of  $-10.57^{\circ}$ ,  $-2.41^{\circ}$  and  $33069.47 \text{ nT}$  respectively. The source parameters namely analytic signal amplitude, local phase, local frequency, local wave-number and, ultimately, the source depths were estimated. The results, particularly the 2-D model A-B show the basement to be intensely fragmented and variably subsided within the basin (Fig. 9a). The floor of the basin is irregularly deformed leading to a considerable variation in the thicknesses of the sedimentary basin from place to place. The irregular floor is most likely the result of an intense block faulting, which began at the time of the formation of the trough as a 'failed arm' of a triple junction (an aulacogen) when the Africa and South America plates drifted apart during the Cretaceous (see Fig. 4). The complex deformation of the basement is revealed in the SPI 2-D model C-D (Fig. 9b). The elongated segment (see distance 72 km in Figs. 7 and 8) was revealed in the 2-D model to have experienced an upward displacement (Fig. 9b). This segment is flanked on both sides by regions displaying downward displacements as initially revealed in the pseudo-gravity result (see Fig. 7). As a result, a shallow sedimentary thickness of 100 m or less is observed over the parts of the basement that were displaced upward and up to 3 km for the areas displaced downward. The deepest sedimentary piles, especially where the basement is folded downward represent possible traps for hydrocarbon given that other conditions are favourable. The margin of the sedimentary and crystalline basement terranes also shows intense basement subsidence that extends downward to about 3.5 km. Furthermore, the sedimentary-basement boundary located at 54 km on profile A-B (Figs. 7 and 8), exhibits an abrupt downward displacement of the basement to a depth of up to 3.5 km (Fig. 9a). This area likely formed during the initiation of the southern Benue trough as a consequence of continental crust rifting. Beyond the sedimentary terrane in the crystalline basement terrane, the basement is fairly deformed resulting in extremely thin overburden or younger sediments (Fig. 9a).

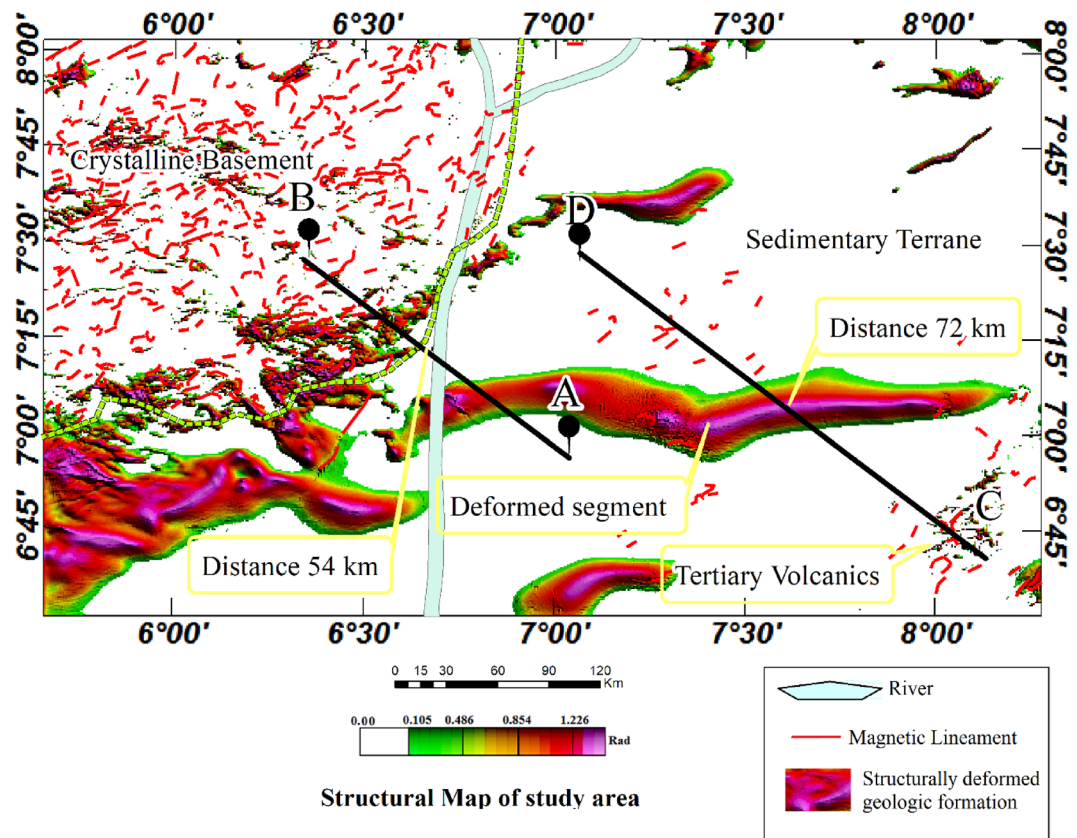
### Structural map

The application of various edge detection techniques to the aeromagnetic anomaly data enhanced different geological structures and igneous bodies within the studied area. The magnetic lineaments were automatically extracted from the amplitudes of the TGM (see Fig. 6) while the structurally deformed elongated formation in the study area was derived from the TDR analysis (see Fig. 8). The map shows geological features in the crystalline basement and the sedimentary basin. Notably, the Cretaceous basin shows only a few lineaments while the crystalline basement is characterised by a densely populated lineament exhibiting complex geological orientation. The structurally deformed segment of the basin, however, exhibits mainly eastward structural alignments.



**Figure 9.** Maps showing 2-D subsurface morphology across profiles (a) A-B. (b) C-D.

The boundary of the basin and the crystalline basement which is 54 km on the profile A-B represent important discontinuity. The intrusion areas, including the elongated segment within the basin and along its boundary, constitute key areas for detailed investigation aimed at mineral exploitation, particularly for minerals such as gold, lead, zinc, and copper (Fig. 10).



**Figure 10.** Structural map of the study area.

## Conclusion

The utilization of aeromagnetic data for investigating the crustal structures and igneous bodies within the sedimentary basin of the southern Benue trough and the adjacent crystalline basement of southwestern Nigeria has yielded significant findings. Numerous linear geologic structures, including faults, as well as basement subsidence and volcanic intrusions, have been detected. Notably, a section of the sedimentary basin exhibits substantial upward and downward displacements of the basement, resulting from intense deformation and block faulting. These geological events played a crucial role in shaping and reshaping the entire Benue trough since the Cretaceous period. The crystalline basement in the study area is separated from the sedimentary basin by a large graben that extends as far down as 3 km. Moreover, a substantial igneous body has been identified in the southern part of the sedimentary basin. This igneous body exhibits abnormally high density and strong magnetic properties, characterized by positive pseudo-gravity anomalies. Surrounding the igneous body on both sides are linear negative anomalies, indicating the presence of a rift valley. The occurrence of magnetically quite causative bodies associated with igneous bodies within the sedimentary basin and along the margin of the crystalline basement suggests the need for further geological surveys to identify potential locations for gold, lead, zinc, and copper exploitation. These surveys will be instrumental in determining the specific areas where these valuable mineral resources may be found. Finally, the areas of severe downward displacement with considerable accumulation of marine sediments suggest high-probability zones for follow-up hydrocarbon investigation.

## Data availability

The reconstruction data analysed during the current study are available in the Earthbyte repository, <https://www.earthbyte.org/gplates-2-3-software-and-data-sets/>. However, the aeromagnetic data that support the findings of this study are available from the Nigerian Geological Survey Agency but restrictions apply to the availability of these data, which were used under license for the current study, and so are not publicly available. The data are however available from the authors upon reasonable request and with permission of the Nigerian Geological Survey Agency.

Received: 5 February 2023; Accepted: 28 November 2023

Published online: 06 December 2023

## References

1. Ajayi, C. O. & Ajakaiye, D. E. The origin and peculiarities of the Nigerian Benue trough: Another look from recent gravity data obtained from the middle Benue. *Tectonophysics* **80**, 285–303 (1981).



2. Ofoegbu, C. O. A review of the geology of the Benue Trough, Nigeria. *J. Afr. Earth Sci.* **3**, 283–291 (1985).
3. Benkheilil, J. The origin and evolution of the Cretaceous Benue Trough (Nigeria). *J. Afr. Earth Sci.* **8**, 251–282 (1989).
4. Oha, I. A., Onuoha, K. M., Nwegbu, A. N. & Abba, A. U. Interpretation of high resolution aeromagnetic data over southern benue trough, Southeastern Nigeria. *J. Earth Syst. Sci.* **125**, 369–385 (2016).
5. Ofoegbu, C. O. & Onuoha, K. M. Analysis of magnetic data over the Abakaliki Anticlinorium of the Lower Benue Trough, Nigeria. *Mar. Pet. Geol.* **8**, 174–183 (1991).
6. Adebisi, L. S. *et al.* Analysis of aeromagnetic data: Application to Early-Late Cretaceous events in parts of Lower Benue trough, Southern Nigeria. *J. Appl. Geophys.* **178**, 104052 (2020).
7. Seton, M. *et al.* Global continental and ocean basin reconstructions since 200Ma. *Earth Sci. Rev.* **113**, 212–270 (2012).
8. Müller, R. D. *et al.* GPlates: Building a virtual earth through deep time. *Geochem. Geophys. Geosyst.* **19**, 2243–2261 (2018).
9. Maurin, J. C. & Benkheilil, J. Model of Pb/Zn mineralization genesis in the Cretaceous Benue Trough (Nigeria): Structural, geophysical and geochemical constraints. *J. Afr. Earth Sci.* **11**, 345–349 (1990).
10. Rui, S., Zhou, Z., Jostad, H. P., Wang, L. & Guo, Z. Numerical prediction of potential 3-dimensional seabed trench profiles considering complex motions of mooring line. *Appl. Ocean Res.* **139**, 103704 (2023).
11. Ma, S. *et al.* Surface multi-hazard effect of underground coal mining. *Landslides* **20**, 39–52 (2023).
12. Tie, Y., Rui, X., Shi-Hui, S., Zhao-Kai, H. & Jin-Yu, F. A real-time intelligent lithology identification method based on a dynamic felling strategy weighted random forest algorithm. *Pet. Sci.* <https://doi.org/10.1016/j.petsci.2023.09.011> (2023).
13. Xu, Z. *et al.* Characteristics of source rocks and genetic origins of natural gas in deep formations, Gudian depression, Songliao Basin NE China. *ACS Earth Space Chem.* **6**(1750), 1771 (2022).
14. Zhao, M. *et al.* Mapping urban dynamics (1992–2018) in Southeast Asia using consistent nighttime light data from DMSP and VIIRS. *Remote Sens. Environ.* **248**, 111980 (2020).
15. Zhou, G. *et al.* Gaussian inflection point selection for LiDAR hidden echo signal decomposition. *IEEE Geosci. Remote Sens. Lett.* **19**, 1–5 (2022).
16. Zhou, G. *et al.* An innovative echo detection system with STM32 gated and PMT adjustable gain for airborne LiDAR. *Int. J. Remote Sens.* **42**, 9187–9211 (2021).
17. Cheng, D., Chen, L., Lv, C., Guo, L. & Kou, Q. Light-guided and cross-fusion U-net for anti-illumination image super-resolution. *IEEE Trans. Circuits Syst. Video Technol.* **32**, 8436–8449 (2022).
18. Dong, W., Yang, Y., Qu, J., Xiao, S. & Li, Y. Local information-enhanced graph-transformer for hyperspectral image change detection with limited training samples. *IEEE Trans. Geosci. Remote Sens.* **61**, 1–14 (2023).
19. Zhou, S., Lu, C., Zhu, X. & Li, F. Preparation and characterization of high-strength geopolymer based on BH-1 lunar soil simulant with low alkali content. *Engineering* **7**, 1631–1645 (2021).
20. Cheng, B., Zhu, D., Zhao, S. & Chen, J. Situation-aware IoT service coordination using the event-driven SOA paradigm. *IEEE Trans. Netw. Serv. Manag.* **13**, 349–361 (2016).
21. Zhao, J. *et al.* A human-like trajectory planning method on a curve based on the driver preview mechanism. *IEEE Trans. Intell. Transport. Syst.* <https://doi.org/10.1109/TITS.2023.3285430> (2023).
22. Zhou, D., Sheng, M., Li, J. & Han, Z. Aerospace integrated networks innovation for empowering 6G: A survey and future challenges. *IEEE Commun. Surv. Tutor.* **25**, 975–1019 (2023).
23. Xu, B. & Guo, Y. A novel DVL calibration method based on robust invariant extended Kalman filter. *IEEE Trans. Veh. Technol.* <https://doi.org/10.1109/TVT.2022.3182017> (2022).
24. Xu, B., Wang, X., Zhang, J., Guo, Y. & Razzaqi, A. A. A novel adaptive filtering for cooperative localization under compass failure and non-gaussian noise. *IEEE Trans. Veh. Technol.* <https://doi.org/10.1109/TVT.2022.3145095> (2022).
25. Grove, A. T., Cratchley, C. R. & Jones, G. P. An Interpretation of the geology and gravity anomalies of the Benue Valley Nigeria. *Geogr. J.* **132**, 413 (1966).
26. Fairhead, J. D. & Okereke, C. S. A regional gravity study of the West African rift system in Nigeria and Cameroon and its tectonic interpretation. *Tectonophysics* **143**, 141–159 (1987).
27. Ajakaiye, D. E. & Burke, K. A Bouguer gravity map of Nigeria. *Tectonophysics* **16**, 103–115 (1973).
28. Adighije, C. I. A gravity interpretation of the Benue trough, Nigeria. *Tectonophysics* **79**, 109–128 (1981).
29. Adighije, C. I. & Ofrey, O. Gravity field of the Benue Trough, Nigeria. *Geosurveying* **20**, 207 (1982).
30. Adighije, C. Gravity field of Benue Trough, Nigeria. *Nature* **282**, 199–201. <https://doi.org/10.1038/282199a0> (1979).
31. Ojo, S. B. & Ajakaiye, D. E. Preliminary interpretation of gravity measurements in the middle Niger Basin Area, Nigeria. In *Geology of Nigeria* (ed. Kogbe, C. A.) 347–358 (Elizabeth Publishing Co, 1989).
32. Adighije, C. I. Gravity study of lower Benue Trough, Nigeria. *Geol. Mag.* **118**, 59–67 (1981).
33. Ofoegbu, C. O. Interpretation of aeromagnetic anomalies over the lower and middle Benue Trough of Nigeria. *Geophys. J. R. Astron. Soc.* **79**, 813–823 (1984).
34. Olade, M. A. & Morton, R. D. Origin of lead-zinc mineralization in the southern Benue Trough, Nigeria - Fluid inclusion and trace element studies. *Miner. Depos.* **20**, 76–80 (1985).
35. Ofoegbu, C. O. Interpretation of an aeromagnetic profile across the Benue Trough of Nigeria. *J. Afr. Earth Sci.* **3**, 293–296 (1985).
36. Singh, U. K. & Soren, J. Interpretation of gravity anomaly of parts of lower and middle Benue Trough, Nigeria. *Int. J. Sci. Eng. Res.* **8**, 564–571 (2017).
37. Abdullahi, M., Kumar, R., Idi, B. Y., Singh, U. K. & Abba, A. U. Analysis of recent airborne gravity and magnetic data for the interpretation of basement structures underneath the south-western Benue trough using source edge detector filters. *Acta Geophys.* <https://doi.org/10.1007/s11600-023-01060-1> (2023).
38. Okiwelu, A. A., Okwueze, E. E., Akpan, P. O. & Ude, I. A. Basin framework and basement structuring of Lower Benue trough, West Africa based on regional magnetic field data: Tectonic and hydrocarbon implications. *Earth Sci. Res.* **4**, 1–20 (2014).
39. Abdullahi, M., Prajapati, R. & Singh, U. K. Identification of concealed Pb-Zn deposits from high-resolution aeromagnetic data of parts of lower Benue Trough, Nigeria-West Africa. 228–231, <https://doi.org/10.1190/segj2018-061.1> (2019).
40. Ugbor, D. O. & Okeke, F. N. Geophysical investigation in the Lower Benue trough of Nigeria using gravity method. *Int. J. Phys. Sci.* **5**, 1757–1769 (2010).
41. Obi, D. A. & Obeten, O. E. Aeromagnetic mapping of basement relief features in parts of Lower Benue Trough (Afikpo – Ugep): Implications on hydrocarbon prospectivity south-east, Nigeria. *Glob. J. Pure Appl. Sci.* **23**, 287 (2017).
42. Salako, K. & Udensi, E. Two dimensional modeling of subsurface structure over upper Benue trough and Bornu basin in North eastern Nigeria. *Nig. J. Technol. Res.* **10**, 94 (2015).
43. Igwe, D. I. & Umego, M. N. Interpretation of aeromagnetic anomalies over some parts of lower Benue Trough using spectral analysis technique. *Int. J. Sci. Technol. Res.* **2**, 153–165 (2013).
44. Salako, K. A. & Udensi, E. E. Spectral depth analysis of parts of upper benue trough and Borno Basin, North-East Nigeria, using aeromagnetic data. *Int. J. Sci. Res.* **2**, 2319–7064 (2013).
45. Salako, K. A. Depth to basement determination using source parameter imaging (SPI) of aeromagnetic data: An application to upper benue trough and Borno Basin, Northeast, Nigeria. *Acad. Res. Int.* **5**, 74–86 (2014).
46. Salawu, N. B., Orosun, M. M., Adebisi, L. S., Abdulraheem, T. Y. & Dada, S. S. Existence of subsurface structures from aeromagnetic data interpretation of the crustal architecture around Ibi, Middle Benue Nigeria. *SN Appl. Sci.* <https://doi.org/10.1007/s42452-020-2230-5> (2020).

47. Obi, D. A., Okereke, C. S., Obei, B. C. & George, A. M. Aeromagnetic modeling of subsurface intrusives and its implication on hydrocarbon evaluation of the Lower Benue Trough Nigeria. *Eur. J. Sci. Res.* **47**, 347–361 (2010).
48. Agagu, O. K. & Adighije, C. I. Tectonic and sedimentation framework of the lower Benue Trough, southeastern Nigeria. *J. Afr. Earth Sci.* **1**, 267–274 (1983).
49. Adebisi, L. S. *et al.* A new insight into the structural framework of a crystalline formation and the adjoining sedimentary terrain in parts of the precambrian basement complex of Nigeria. *Pure Appl. Geophys.* **179**, 1749–1773 (2022).
50. Awoyemi, M. O. *et al.* Geophysical investigation of the possible extension of Ifewara fault zone beyond Ilesa area, southwestern Nigeria. *Arab. J. Geosci.* **10**, 1–14 (2017).
51. Awoyemi, M. O., Ajama, O. D., Hamed, O. S., Arogundade, A. B. & Falade, S. C. Geophysical mapping of buried faults in parts of Bida Basin, North Central Nigeria. *Geophys. Prospect.* **66**, 40–54 (2018).
52. Zhou, G., Zhang, R. & Huang, S. Generalized buffering algorithm. *IEEE Access* **9**, 27140–27157 (2021).
53. Shi, Y., Xi, J., Hu, D., Cai, Z. & Xu, K. RayMVSNet++: Learning ray-based 1D implicit fields for accurate multi-view stereo. *IEEE Trans. Pattern Anal. Mach. Intell.* <https://doi.org/10.1109/TPAMI.2023.3296163> (2023).
54. Zhang, L. J., Buatois, L. A. & Mángano, M. G. Potential and problems in evaluating secular changes in the diversity of animal-substrate interactions at ichnospecies rank. *Terra Nova* **34**, 433–440 (2022).
55. Kelemework, Y., Fedi, M. & Milano, M. A review of spectral analysis of magnetic data for depth estimation. *Geophysics* <https://doi.org/10.1190/geo2020-0268.1> (2021).
56. Dong, W. *et al.* Abundance matrix correlation analysis network based on hierarchical multihead self-cross-hybrid attention for hyperspectral change detection. *IEEE Trans. Geosci. Remote Sens.* **61**, 1–13 (2023).
57. Zheng, Y. *et al.* Recognition and depth estimation of ships based on binocular stereo vision. *J. Mar. Sci. Eng.* **10**, 1153 (2022).
58. Zhu, W. *et al.* Reconstructing of high-spatial-resolution three-dimensional electron density by ingesting SAR-derived VTEC into IRI model. *IEEE Geosci. Remote Sens. Lett.* **19**(1), 5 (2022).
59. Dong, Y., Xu, B., Liao, T., Yin, C. & Tan, Z. Application of local-feature-based 3D point cloud stitching method of low-overlap point cloud to aero-engine blade measurement. *IEEE Trans. Instrum. Meas.* <https://doi.org/10.1109/TIM.2023.3309384> (2023).
60. Yin, L. *et al.* YOLOV4\_CSPBi: Enhanced land target detection model. *Land (Basel)* **12**, 1813 (2023).
61. Yin, L. *et al.* U-Net-STN: A novel end-to-end lake boundary prediction model. *Land (Basel)* **12**, 1602 (2023).
62. Li, R. *et al.* Denoising method of ground-penetrating radar signal based on independent component analysis with multifractal spectrum. *Measurement (Lond.)* **192**, 110886 (2022).
63. Ren, C. *et al.* A plastic strain-induced damage model of porous rock suitable for different stress paths. *Rock Mech. Rock Eng.* **55**, 1887–1906 (2022).
64. Yu, J. *et al.* Stress relaxation behaviour of marble under cyclic weak disturbance and confining pressures. *Measurement (Lond.)* **182**, 1097777 (2021).
65. Nigerian Geological Survey Agency. Nationwide Aeromagnetic and Aeroradiometric Data (2006).
66. Reford, S. W., James Misener, D., Ugalde, H. A., Gana, J. S. & Oladele, O. Nigeria's nationwide high-resolution airborne geophysical surveys. In *Society of Exploration Geophysicists International Exposition and 80th Annual Meeting 2010, SEG 2010* 1835–1839 (Society of Exploration Geophysicists, 2010). <https://doi.org/10.1190/1.3513199>.
67. Briggs, I. C. Machine contouring using minimum curvature. *Geophysics* **39**, 39–48 (1974).
68. Li, X. Understanding 3D analytic signal amplitude. *Geophysics* **71**, L13–L16 (2006).
69. Bastani, M. & Pedersen, L. B. Automatic interpretation of magnetic dike parameters using the analytical signal technique. *Geophysics* **66**, 551–561 (2001).
70. Salem, A. Interpretation of magnetic data using analytic signal derivatives. *Geophys. Prospect.* **53**, 75–82 (2005).
71. Roest, W. R., Verhoef, J. & Pilkington, M. Magnetic interpretation using the 3-D analytic signal. *Geophysics* **57**, 116–125 (1992).
72. Phillips, J. D. Locating magnetic contacts: A comparison of the horizontal gradient, analytic signal, and local wavenumber methods. *2000 SEG Annu. Meet.* **19**, 402–405 (2000).
73. Verdusco, B., Fairhead, J. D., Green, C. M. & MacKenzie, C. New insights into magnetic derivatives for structural mapping. *Leading Edge (Tulsa, OK)* **23**, 116–119 (2004).
74. Nabighian, M. N. *et al.* The historical development of the magnetic method in exploration. *Geophysics* <https://doi.org/10.1190/1.2133784> (2005).
75. Dentith, M. & Mudge, S. Geophysics for the mineral exploration geoscientist. In *AusIMM Bulletin* (eds Dentith, M. & Mudge, S.) (Cambridge University Press, 2014). <https://doi.org/10.1017/cbo9781139024358>.
76. Adebisi, L. S. *et al.* Analysis of airborne magnetic and gamma-ray spectrometry data for the geothermal source and conduits of the Ikogosi warm spring, southwestern Nigeria. *Arab. J. Geosci.* **15**, 1–13 (2022).
77. Baranov, V. A new method for interpretation of aeromagnetic maps: Pseudo-gravimetric anomalies. *Geophysics* **22**, 359–382 (1957).
78. Bilim, F. & Ates, A. An enhanced method for estimation of body magnetization direction from pseudogravity and gravity data. *Comput. Geosci.* **30**, 161–171 (2004).
79. Grauch, V. J. S. & Cordell, L. Limitations of determining density or magnetic boundaries from the horizontal gradient of gravity or pseudogravity data. *Geophysics* **52**, 118–121 (1987).
80. Mashhadi, S. R. & Safari, M. The effectiveness of pseudo-gravity transformation in mineral exploration: An example from a placer magnetite deposit. In *3rd Conference on Geophysics for Mineral Exploration and Mining, Held at Near Surface Geoscience 2020* (2020). <https://doi.org/10.3997/2214-4609.202020015>.
81. Panepinto, S., De Luca, L., Mantovani, M., Sfolciaghi, M. & Garcea, B. Using the pseudo-gravity functional transform to enhance deep-magnetic sources and enrich regional gravity data. *SEG Tech. Progr. Expand. Abstr.* **33**, 1275–1279 (2014).
82. Blakely, R. J. Potential theory in gravity and magnetic applications. *Potential Theory Gravity Magn. Appl.* <https://doi.org/10.1017/CBO9780511549816> (1995).
83. Kearey, P. & Brooks, M. *An Introduction to Geophysical Exploration* 2nd edn. (Wiley, 1991).
84. Miller, H. G. & Singh, V. Potential field tilt—a new concept for location of potential field sources. *J. Appl. Geophys.* **32**, 213–217 (1994).
85. Nasuti, A., Pascal, C. & Ebbing, J. Onshore-offshore potential field analysis of the Møre-Trøndelag fault complex and adjacent structures of Mid Norway. *Tectonophysics* **518–521**, 17–28 (2012).
86. Smith, R. S., Thurston, J. B., Dai, T. F. & MacLeod, I. N. iSPI™—The improved source parameter imaging method. *Geophys. Prospect.* **46**, 141–151 (1998).
87. Thurston, J. B. & Smith, R. S. Automatic conversion of magnetic data to depth, dip, and susceptibility contrast using the SPI (TM) method. *Geophysics* **62**, 807–813 (1997).
88. Ajibade, A. C. Structural and tectonic evolution of the Nigerian basements with special reference to NW Nigeria. In *International Conference on Proterozoic Geology and Tectonics of High-Grade Terrain, University of Ife-Ife, Nigeria* Vol. 22 (ed. Ajibade, A. C.) (University of Ife Nigeria, 1988).
89. Adebisi, L. S., Eluwole, A. B., Fajana, A. O. & Salawu, N. B. A preliminary geophysical investigation of lead mineralization in parts of the crystalline basement complex of Nigeria. *Model Earth Syst. Environ.* <https://doi.org/10.1007/s40808-023-01782-7> (2023).
90. Oluyide, P. O. *Structural Trends in the Nigerian Basement Complex* 93–98 (Nigeria Geological Survey, 1988).

91. Dada, S. S., Tubosun, I. A., Lancelot, J. R. & Lar, A. U. Late Archaean UPb age for the reactivated basement of Northeastern Nigeria. *J. Afr. Earth Sci.* **16**, 405–412 (1993).
92. Pidgeon, R. T., Van Breemen, O. & Oyawoye, M. O. Pan-{African} and earlier events in the basement complex of Nigeria. *25th Int. Geol. Congr.* **3**, 667 (1976).
93. Salawu, N. B. Aeromagnetic and digital elevation model constraints on the structural framework of southern margin of the Middle Niger Basin, Nigeria. *Sci. Rep.* <https://doi.org/10.1038/s41598-021-00829-y> (2021).
94. Espinoza, M. *et al.* The synrift phase of the early Domeyko Basin (Triassic, northern Chile): Sedimentary, volcanic, and tectonic interplay in the evolution of an ancient subduction-related rift basin. *Basin Res.* **31**, 4–32 (2019).
95. Withjack, M. O., Schlische, R. W. & Olsen, P. E. Rift-basin structure and its influence on sedimentary systems. *Sediment. Cont. Rifts* <https://doi.org/10.2110/pec.02.73.0057> (2002).
96. Li, J. *et al.* Enrichment of strategic metals in the Upper Triassic coal from the Nui Hong open-pit mine, Thai Nguyen Coalfield, NE Vietnam. *Ore Geol. Rev.* **153**, 105301 (2023).
97. Li, Z. Q. *et al.* Mesozoic-Cenozoic tectonic evolution and dynamics of the Songliao Basin, NE Asia: Implications for the closure of the Paleo-Asian Ocean and Mongol-Okhotsk Ocean and subduction of the Paleo-Pacific Ocean. *Earth-Sci. Rev.* <https://doi.org/10.1016/j.earscirev.2020.103471> (2021).
98. Farrington, J. L. A preliminary description of the Nigerian lead-zinc field. *Econ. Geol.* **47**, 583–608 (1952).
99. Akande, S. O. & Mücke, A. Mineralogical, textural and paragenetic studies of the leadzinc copper mineralization in the lower Benue Trough (Nigeria) and their genetic implications. *J. Afr. Earth Sci.* **9**, 23–29 (1989).
100. Offodile, M. E. A mineral survey of the Cretaceous of the Benue Valley, Nigeria. *Cretac. Res.* **1**, 101–124 (1980).
101. Akande, S. O. & Mücke, A. Coexisting copper sulphides and sulphosalts in the Abakaliki Pb-Zn deposit, lower Benue trough (Nigeria) and their genetic significance. *Mineral. Petrol.* **47**, 183–192 (1993).

## Author contributions

L.S.A. Conceptualization, Methodology, Validation, Formal analysis, Investigation, Resources, Data curation, Writing - Original draft, Writing - Review and Editing. A.B.E. Validation, Supervision, Project administration, Review and Editing. A.O.F. Visualization, Investigation, Supervision, Review and Editing. N.B.S. Visualization, Investigation, Review and Editing. A.S. Visualization, Investigation, Review and Editing.

## Competing interests

The authors declare no competing interests.

## Additional information

**Correspondence** and requests for materials should be addressed to L.S.A.

**Reprints and permissions information** is available at [www.nature.com/reprints](http://www.nature.com/reprints).

**Publisher's note** Springer Nature remains neutral with regard to jurisdictional claims in published maps and institutional affiliations.



**Open Access** This article is licensed under a Creative Commons Attribution 4.0 International License, which permits use, sharing, adaptation, distribution and reproduction in any medium or format, as long as you give appropriate credit to the original author(s) and the source, provide a link to the Creative Commons licence, and indicate if changes were made. The images or other third party material in this article are included in the article's Creative Commons licence, unless indicated otherwise in a credit line to the material. If material is not included in the article's Creative Commons licence and your intended use is not permitted by statutory regulation or exceeds the permitted use, you will need to obtain permission directly from the copyright holder. To view a copy of this licence, visit <http://creativecommons.org/licenses/by/4.0/>.

© The Author(s) 2023



## Terms and Conditions

Springer Nature journal content, brought to you courtesy of Springer Nature Customer Service Center GmbH (“Springer Nature”).

Springer Nature supports a reasonable amount of sharing of research papers by authors, subscribers and authorised users (“Users”), for small-scale personal, non-commercial use provided that all copyright, trade and service marks and other proprietary notices are maintained. By accessing, sharing, receiving or otherwise using the Springer Nature journal content you agree to these terms of use (“Terms”). For these purposes, Springer Nature considers academic use (by researchers and students) to be non-commercial.

These Terms are supplementary and will apply in addition to any applicable website terms and conditions, a relevant site licence or a personal subscription. These Terms will prevail over any conflict or ambiguity with regards to the relevant terms, a site licence or a personal subscription (to the extent of the conflict or ambiguity only). For Creative Commons-licensed articles, the terms of the Creative Commons license used will apply.

We collect and use personal data to provide access to the Springer Nature journal content. We may also use these personal data internally within ResearchGate and Springer Nature and as agreed share it, in an anonymised way, for purposes of tracking, analysis and reporting. We will not otherwise disclose your personal data outside the ResearchGate or the Springer Nature group of companies unless we have your permission as detailed in the Privacy Policy.

While Users may use the Springer Nature journal content for small scale, personal non-commercial use, it is important to note that Users may not:

1. use such content for the purpose of providing other users with access on a regular or large scale basis or as a means to circumvent access control;
2. use such content where to do so would be considered a criminal or statutory offence in any jurisdiction, or gives rise to civil liability, or is otherwise unlawful;
3. falsely or misleadingly imply or suggest endorsement, approval, sponsorship, or association unless explicitly agreed to by Springer Nature in writing;
4. use bots or other automated methods to access the content or redirect messages
5. override any security feature or exclusionary protocol; or
6. share the content in order to create substitute for Springer Nature products or services or a systematic database of Springer Nature journal content.

In line with the restriction against commercial use, Springer Nature does not permit the creation of a product or service that creates revenue, royalties, rent or income from our content or its inclusion as part of a paid for service or for other commercial gain. Springer Nature journal content cannot be used for inter-library loans and librarians may not upload Springer Nature journal content on a large scale into their, or any other, institutional repository.

These terms of use are reviewed regularly and may be amended at any time. Springer Nature is not obligated to publish any information or content on this website and may remove it or features or functionality at our sole discretion, at any time with or without notice. Springer Nature may revoke this licence to you at any time and remove access to any copies of the Springer Nature journal content which have been saved.

To the fullest extent permitted by law, Springer Nature makes no warranties, representations or guarantees to Users, either express or implied with respect to the Springer nature journal content and all parties disclaim and waive any implied warranties or warranties imposed by law, including merchantability or fitness for any particular purpose.

Please note that these rights do not automatically extend to content, data or other material published by Springer Nature that may be licensed from third parties.

If you would like to use or distribute our Springer Nature journal content to a wider audience or on a regular basis or in any other manner not expressly permitted by these Terms, please contact Springer Nature at

[onlineservice@springernature.com](mailto:onlineservice@springernature.com)